

## SEMI-CIRCULAR BEND SETS (SCB TEST)

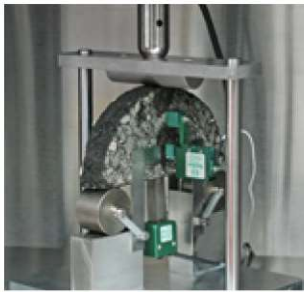
### STANDARD

- ▶ ASTM D8044



### STANDARD

- ▶ AASHTO TP105 (With UTM-30 only)



### STANDARD

- ▶ AASHTO TP124



### STANDARD

- ▶ EN 12697-44



## TRIAXIAL TEST - UNIVERSAL TRIAXIAL CELL

### STANDARD

- ▶ AASHTO T307/TP46 ▶ EN 12697-25B
- ▶ AASHTO T342/TP62, T378/TP79 (with UTM-30 and UTM-130 only)



## AUTOMATIC TRIAXIAL CELL

### STANDARD

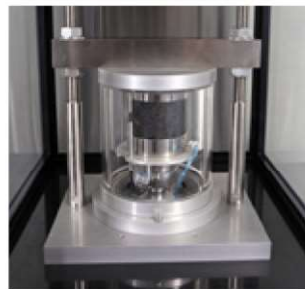
- ▶ EN 12697-25B ▶ AASHTO TP107, T342/TP62, T378/TP79 (with UTM-30 and UTM-130 only)



## ASPHALTQUBE TRIAXIAL CELL

### STANDARD

- ▶ EN 12697-25B ▶ AASHTO T378/TP79



## INDIRECT TENSILE RESILIENT MODULUS

### STANDARD

- ▶ AASHTO TP31 ▶ ASTM D4123
- ▶ EN 12697-26C ▶ BS DD213 ▶ AS 2891.13.1



## INDIRECT TENSILE FATIGUE)

### STANDARD

- ▶ EN 12697-24E



## INDIRECT TENSILE WITH ON-SAMPLE DEFORMATION MEASUREMENT

### STANDARD

- ▶ ASTM D7369 ▶ AASHTO T322/TP9 ▶ NCHRP 1-28A



This is one of the many **ADVANCED** products of **CONTROLS** Group range.

To get more information visit [www.controls-group.com](http://www.controls-group.com) or link directly to the QRCode



Application color guide:  
suitable for

■ all testers including AMPTs  
■ UTM machines only

■ ASPHALTQUBE

### DISK-SHAPED COMPACTION TENSION TEST SET

**STANDARD**

▶ ASTM D7313



### DYNAMIC MODULUS TEST SET

**STANDARD**

▶ AASHTO T342/TP62 ▶ AASHTO T378/TP79 (NCHRP 9-29).



### UNIAXIAL FATIGUE (S-VECD) TEST SETS

**STANDARD**

▶ AASHTO TP107/S-VECD ▶ EN12697-26D, 26E



### OVERLAY TEST JIG

**STANDARD**

▶ Tex 248-F ▶ ASTM WK 26816



**STANDARD**

▶ AASHTO T378/TP79 (NCHRP 9-29)



### CYCLIC AND PERMANENT DEFORMATION COMPRESSION

**STANDARD**

▶ EN 12697-25A ▶ BS 598-111 ▶ AS2891.12.1



### DYNAMIC MODULUS SMALL DIAMETER TEST SET

**STANDARD**

▶ AASHTO T378/TP79 (NCHRP 9-29)



### SMALL DIAMETER UNIAXIAL FATIGUE (S-VECD) TEST SET



## TSRST AND UTSST TEST SET

### STANDARD

- ▶ EN 12697-46 ▶ AASHTO TP10, with UTM-30 and UTM-130 only ▶ ASTM WK 53284 with UTM-130 only



## FOUR POINT BEND TEST

### STANDARD

- ▶ AASHTO T321 ▶ ASTM D7460 ▶ AG:PT/T233 ▶ AT:PT/T274 ▶ AS3:2000 ▶ EN 12697-24C
- ▶ EN 12697-26D ▶ ASTM D8237



## GAUGE POINT FIXING JIG

### STANDARD

- ▶ NCHRP 9-29 ▶ AASHTO T378/TP79
- ▶ AASHTO T342/TP62
- ▶ AASHTO TP107/S-VECD

The innovative AMPT Gauge Point fixing makes it quick and easy to accurately fix gauge points for on-specimen transducers.

This eliminates potential errors and saves time.



## TRAPEZOIDAL TWO POINT BEND

### STANDARD

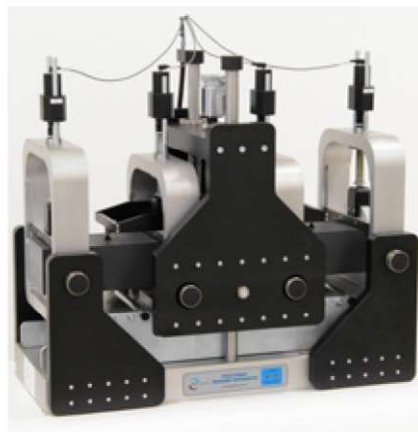
- ▶ EN 12697-24 Annex A
- ▶ EN 12697-26 Annex A



## FOUR POINT BEND TEST EXTRA-LARGE VERSION

### STANDARD

- ▶ EN 12697-24C ▶ EN 12697-26D, with UTM 130XL only




## PULL-OFF AND TENSILE ADHESION TEST STANDARD

### STANDARD

- ▶ EN 12697-48 ▶ TP Asphalt-StB part 81

Application color guide:  
suitable for

 all testers including AMPTs

 ASPHALTQUBE

 UTM machines only